

ZEBRA SHADE

collection

ORLANDO

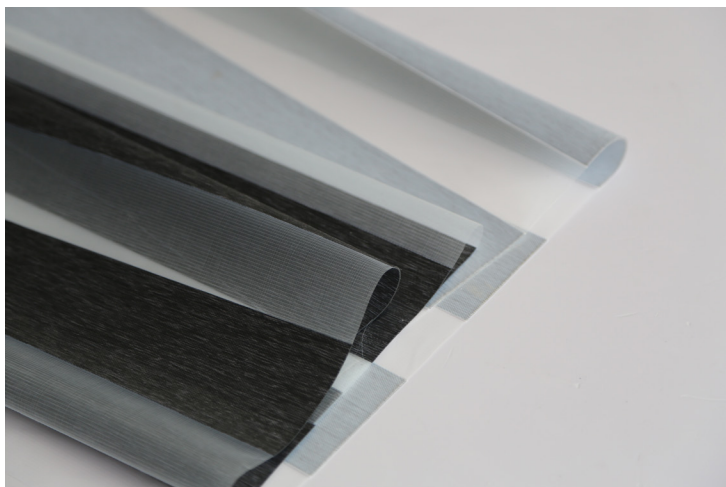
LIGHT-FILTERING (L/F)
<1% OPENNESS

BLACKOUT (B/O)
0% OPENNESS



Your Solutions Weaver and Fabric Support Partner

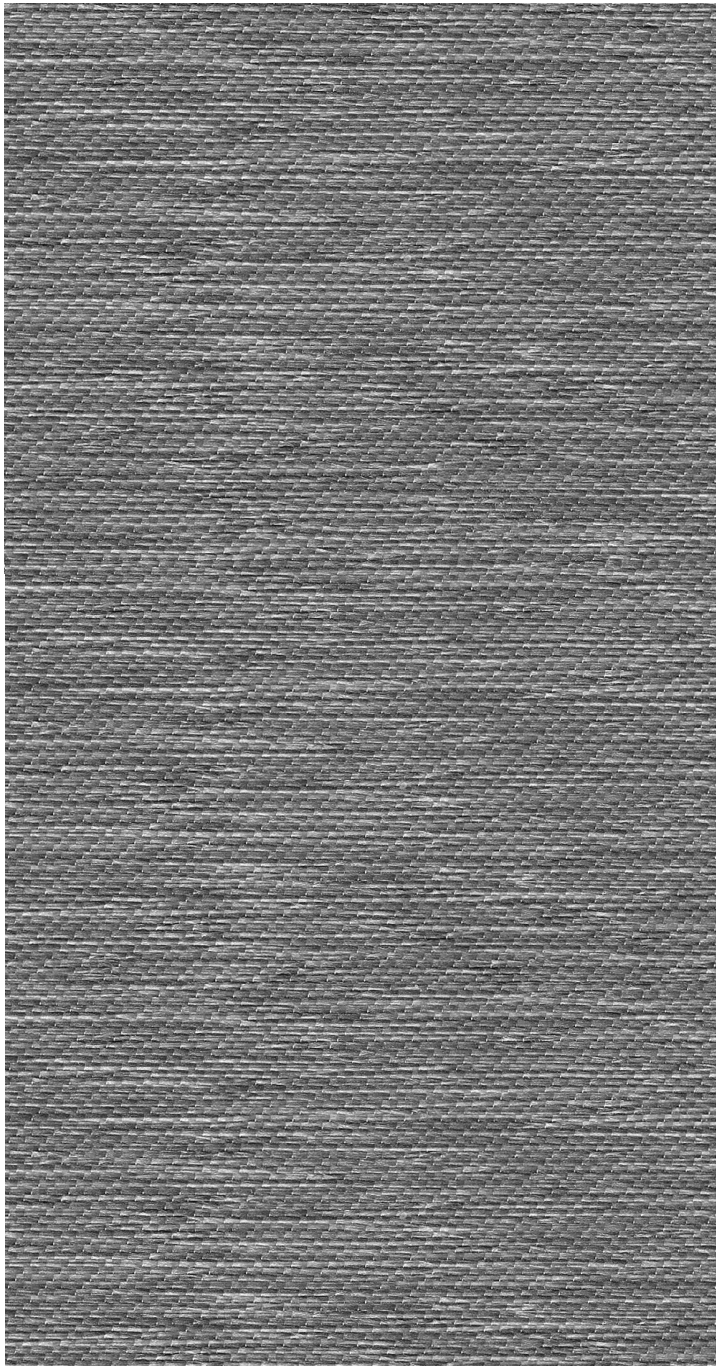
Chic, modern and luxurious are just a few words to describe Orlando. The metallic shine of the fabric's colors provides sophistication for urban and contemporary spaces and a performance advantage with reflecting higher levels of solar radiation. Seamlessly integrate Orlando's light-filtering and blackout styles to provide visibility when needed or complete privacy. Both fabrics allow for light transmittance



RO LLER
SH AD ES



RO MA N
SH AD ES

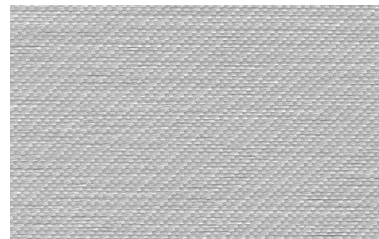


ELEMENTAL GRAY

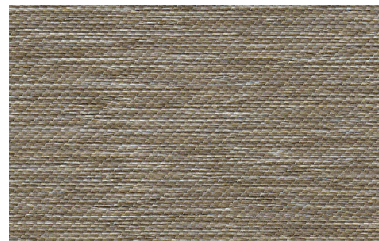
(L/F) BL2103 (B/O) BL2903



SHIMMERING WHITE (L/F) BL2101
(B/O) BL2901



METALLIC SILVER (L/F) BL2102
(B/O) BL2902



CHAMPAGNE (L/F) BL2104
(B/O) BL2904

* (L/F) stands for light-filtering color number and (B/O) stands for blackout color number

FABRICATION METHODS

Cutting: Cold Cut, Ultrasonic, Crush Cut or Laser

Seaming / Hemming: Thermal, High-Frequency, Ultrasonic or Sewing.

PRODUCT SPECIFICATIONS

COMPOSITION	100% Polyester
ROLL WIDTH	118"
ROLL LENGTH	32.8 yd
WEIGHT / YD ²	(L/F) 3.42 oz/yd ² ± 5% (B/O) 4.81 oz/yd ² ± 5%
SHEER & SOLID REPEAT	2.95" / 1.97"

CARE AND CLEANING

Utilize a light feather duster or hairdryer to dust the outside face of the fabric. For thorough cleaning, the use of a small vacuum with a bristle brush will work but show extreme care in making sure not to allow the fabric to enter the vacuum. Use a sponge or a soft cloth dipped in warm water with a light detergent in case of light stains. To avoid leaving a mark, wipe from the periphery of the stain and blend in the cleaning solution. The fabrics cannot be scrubbed with any hard or abrasive objects. Be sure to remove any particulates on the fabrics' surface. Regular brush vacuuming will keep your fabrics looking new and fresh. When cleaning windows around the fabrics, be sure to roll the fabric completely up to allow access to the objects you are cleaning and to minimize any harsh chemicals from coming in contact with the fabrics. Should you discover any threads or frayed edges, do not tear or pull them. Use scissors to cut away any threads gently.

CERTIFICATIONS, TESTS, AND WARRANTY

OEKO-TEX®
STANDARD
100

FREE OF HARMFUL
CHEMICALS

UL
GREENGUARD
GOLD

HEALTHY INDOOR
AIR QUALITY

ROHS
COMPLIANT

FREE OF HARMFUL
METALS

5 YEAR
WARRANTY

QUALITY
GUARANTEED

ASTM
G-21 &
E-2180

BACTERIA &
FUNGAL RESISTANCE

YUMA®

www.yumausa.com