

SUN COOL
FABRICS

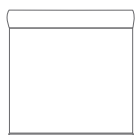
APOLLO

Openness Factor 3%
Screen Fabric
SunCool Collection

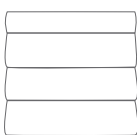


Your Solutions Weaver and Fabric Support Partner

Apollo is a dual-sided fabric offering clean views with significant advantages in heat blockage and glare control. Position the front side of the material to the interior for glare control and the white backside to the exterior for excellent heat reflection



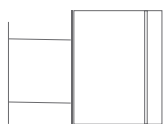
ROLLER
SHADES



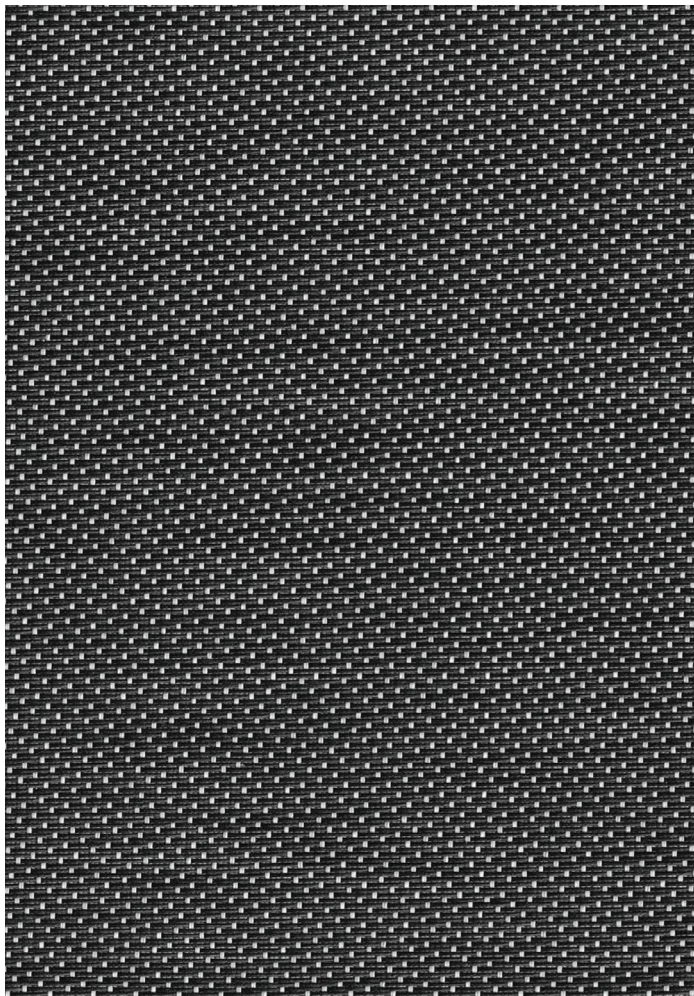
ROMAN
SHADES



PANEL
TRACKS

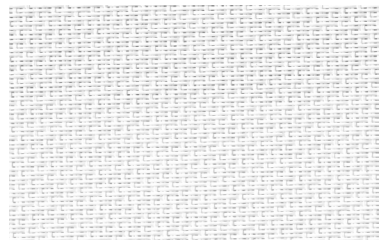


SKYLIGHT
TRACKS



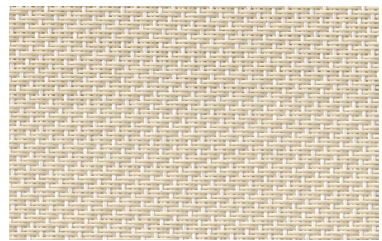
BLACK

SC-A8-304



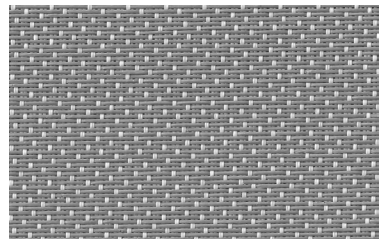
WHITE

SC-A8-301



LINEN

SC-A8-302



GRAY

SC-A8-303



FABRICATION METHODS

Cutting: Cold Cut, Ultrasonic, Crush Cut or Laser
Seaming / Hemming: Thermal, High-Frequency, Ultrasonic or Sewing.

PRODUCT SPECIFICATIONS

COMPOSITION	30%Polyester + 70% PVC
ROLL WIDTH	118"
ROLL LENGTH	33 yd
WEIGHT / YD ²	12.87oz/yd ²
THICKNESS	.026" ± 5%
COLOR FASTNESS	8 Grade (SGS)
YARN COUNT	50*48
BREAKING STRENGTH	Warp 1620 N/5cm Weft 1600 N/5cm

CARE AND CLEANING

Remove dust with vacuum cleaner or compressed air. Do not scrub. Do not use solvents or any abrasive substance which might damage the coating on the fabric. Clean with a sponge or a soft brush dipped in soapy water using mild detergent. Rinse with clean water. Leave the shade down until completely dry. You can also rub the fabric very gently with a clean white pencil eraser to remove small stains.

CERTIFICATIONS, TESTS, AND WARRANTY

<div>CALIFORNIA TITLE 19</div> <div>FLAME RETARDANT</div>	<div>OEKO-TEX® STANDARD 100</div> <div>FREE OF HARMFUL CHEMICALS</div>	<div>UL GREENGUARD GOLD</div> <div>HEALTHY INDOOR AIR QUALITY</div>	<div>ROHS COMPLIANT</div> <div>FREE OF HARMFUL METALS</div>	<div>10 YEAR WARRANTY</div> <div>QUALITY GUARANTEED</div>	<div>ASTM G-21 & E-2180</div> <div>BACTERIA & FUNGAL RESISTANCE</div>	<div>NFPA® 701-TM</div> <div>FIRE RETARDANT</div>
---	--	---	---	---	---	---