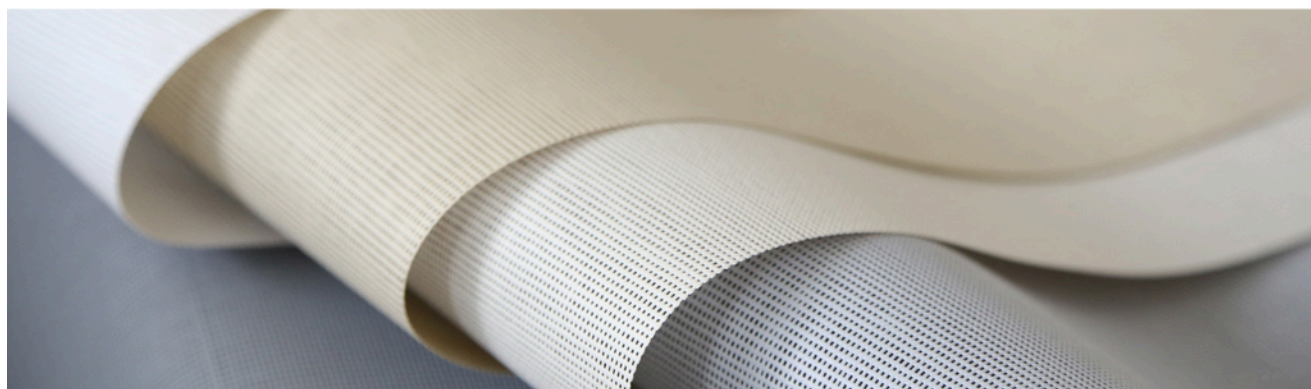


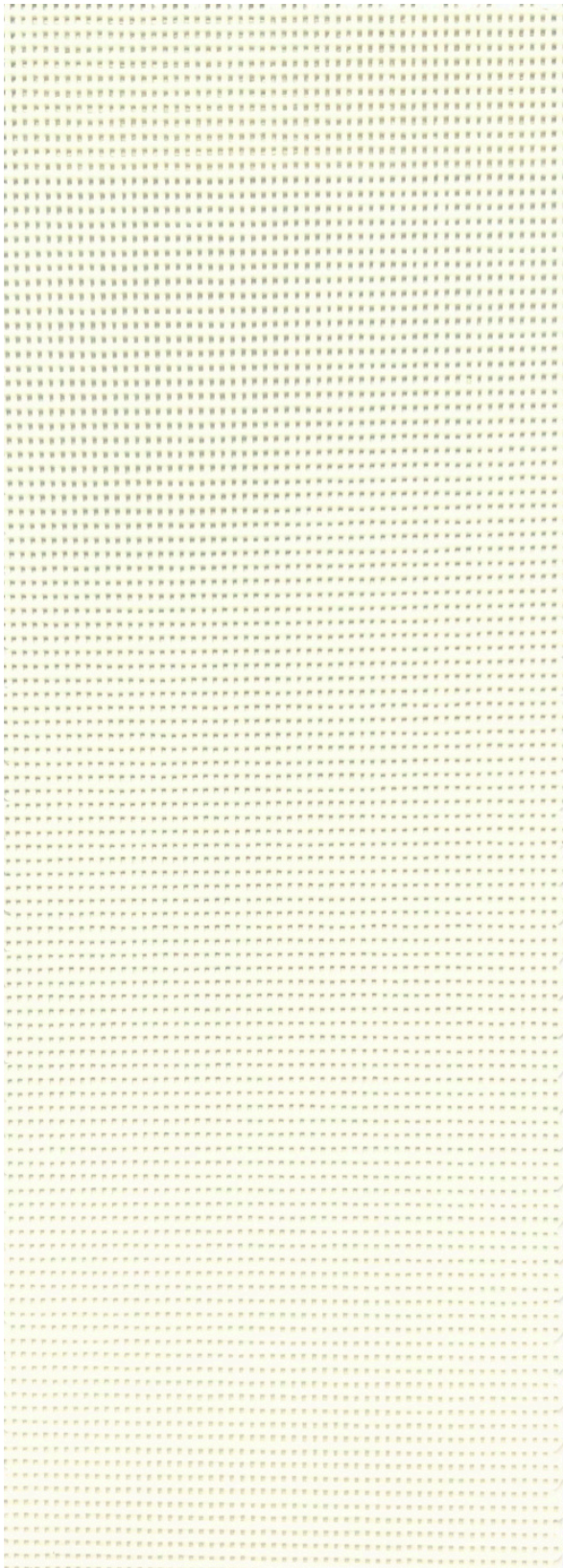
SOLARVIEW ELITE

Openness Factor 14%
Screen Fabric

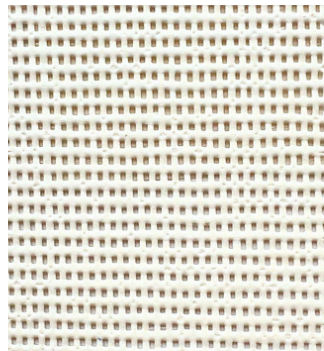


Solarview Elite provides high visibility for maintaining outward views while offering excellent protection against the sun and outdoor elements. The fabric's fibers are coated with a highperformance, waterproof composite material that prevents mildew and bacteria growth. The fabric also maintains its shape and integrity even in harsh environments with wide temperature ranges.

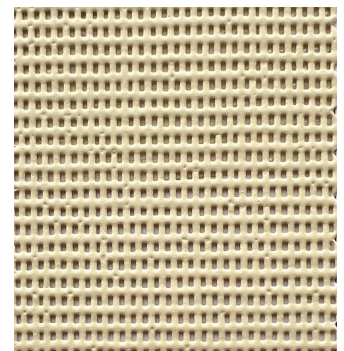




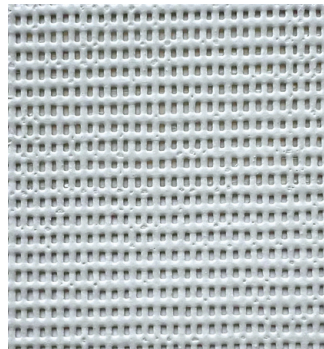
WHITE TSL-M3-1401



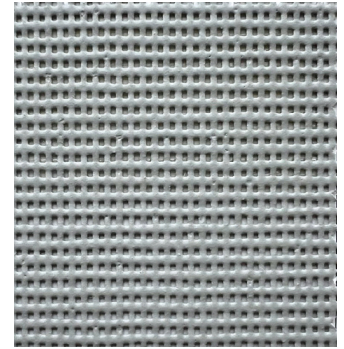
LINEN TSL-M3-1402



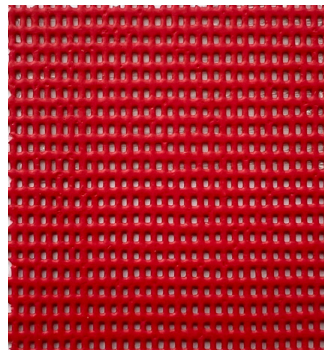
TAUPE TSL-M3-1403



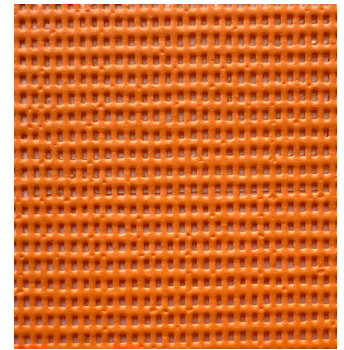
LIGHT GRAY TSL-M3-1404



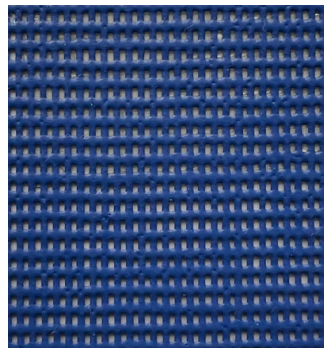
DARK GRAY TSL-M3-1405



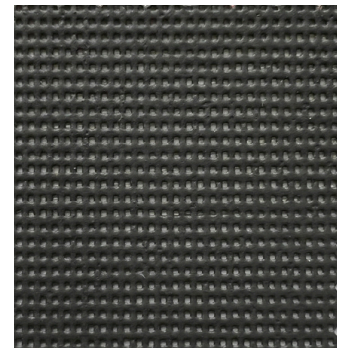
RED TSL-M3-1407



CLEMENTINE TSL-M3-1406



BLUE SKY TSL-M3-1408



CHARCOAL TSL-M3-1409

FABRICATION METHODS

Cutting: Cold Cut, Ultrasonic, Crush Cut, or Laser

Seaming / Hemming: Thermal, High-Frequency, Ultrasonic or Sewing.

PRODUCT SPECIFICATIONS

COMPOSITION	30% Polyester + 70% PVC
ROLL WIDTH	118"
ROLL LENGTH	32 LY
WEIGHT / YD2	13.76 oz/yd2
THICKNESS	0.02" ± 5%
COLOR FASTNESS	8 Grade
YARN COUNT	50*48
BREAKING STRENGTH	Warp 2700N±5% Weft 1800N±5%

CARE AND CLEANING

Remove dust with vacuum cleaner or compressed air. Do not scrub. Do not use solvents or any abrasive substance which might damage the coating on the fabric. Clean with a sponge or a soft brush dipped in soapy water using mild detergent. Rinse with clean water. Leave the shade down until completely dry. You can also rub the fabric very gently with a clean white pencil eraser to remove small stains.

CERTIFICATIONS, TESTS, AND WARRANTY

CALIFORNIA TITLE 19	OEKO-TEX® STANDARD 100	UL GREENGUARD GOLD	ROHS COMPLIANT	10 YEAR WARRANTY	ASTM G-21 & E-2180	NFPA® 701-TM
FLAME RETARDANT	FREE OF HARMFUL CHEMICALS	HEALTHY INDOOR AIR QUALITY	FREE OF HARMFUL METALS	QUALITY GUARANTEED	BACTERIA & FUNGAL RESISTANCE	FIRE RETARDANT

YUMA®

www.yumausa.com